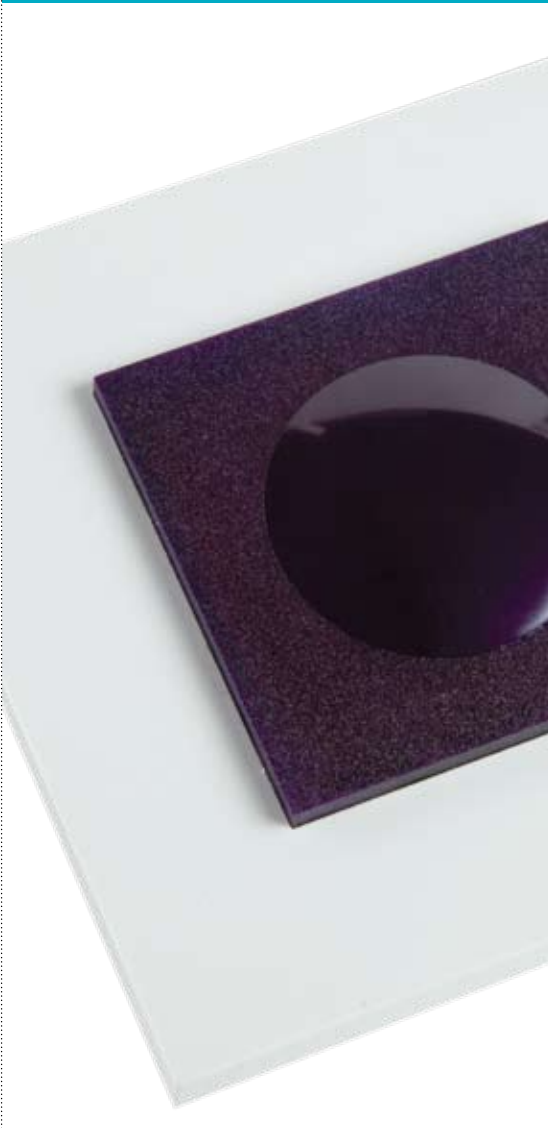


FC 180

BUILT -IN LIGHT BARRIER



Designed for residential,
commercial and light-
industrial use

TX transmitter
RX receiver

- MAXIMUM SAFETY
- STABILIZED POWER SUPPLY
- EASY INSTALLATION
- EMBEDDABLE

RELIABLE

Protection of automatism in doors, gates, blinds, alarm systems and traffic control.

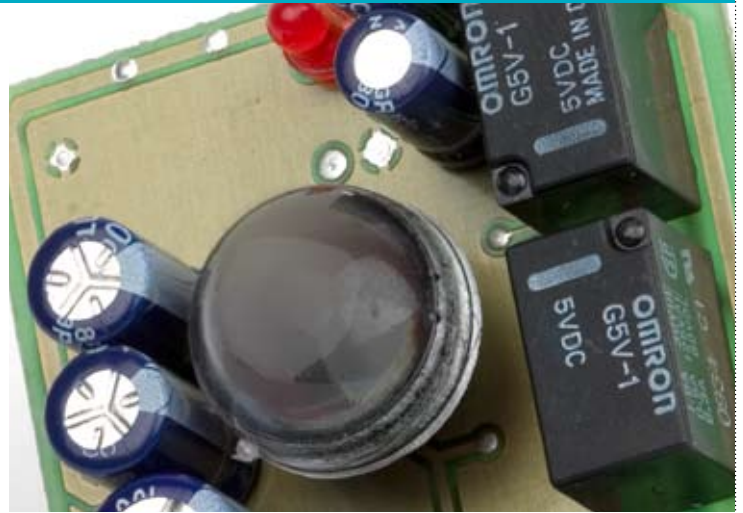
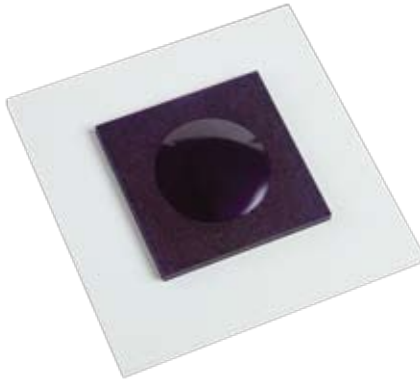
DESIGN

SMINN built-in light barriers make it possible for you to mount the device on the wall. That allows them to fit perfectly into their surroundings, adapting to the architectural lines of any structure.

SMINN

innovative in electronics





Product uses

Protection of automatism in doors, gates, blinds, alarm systems and traffic control.

State of art technology

FC180 light barriers are manufactured using latest generation electronic devices which provide greater reliability and reduced consumption.

Weatherproof

High level of protection against inclement weather IP-54

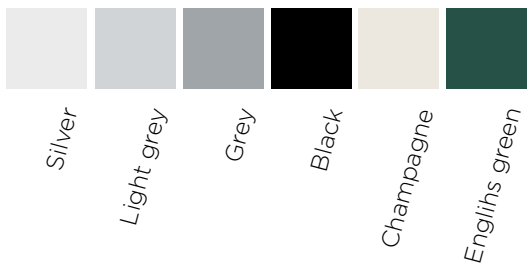
Different configuration possibilities

The FC 180 built-in light barrier comes with various extras:

- > Rain protection cover.
 - > A separator to place the FC 180 on the surface.
- SMINN makes it possible for you to choose between different frame colours.

TECHNICAL SPECIFICATIONS

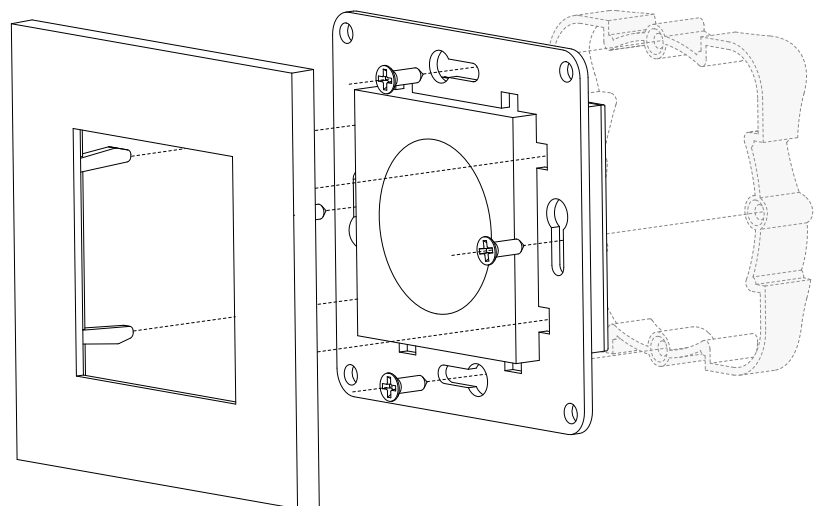
Reach	15 m
Power	12 / 24 V AC/DC
Consumption	TX+RX less than 50 mA
Case	PA6 + 30% FV PC infrared + UV filter
Protection index	IP-54 (IP-65 as per assembly)
Size	H85 x W85 x Z28 mm
Infrared wave	880 nm
Modulation frequency	600 Hz
Contact relay	0,5 Amp.
Action time	< 20 ms
Operating temperature	-20°C / + 70°C



innovative in electronics

Elson Sistemas

T. +34 944 525 120
 info@sminn.com
 Pol. Torrelarragoiti, P6 - A3 - 1º
 48170 Zamudio Vizcaya (Spain)



* Accessory not included

