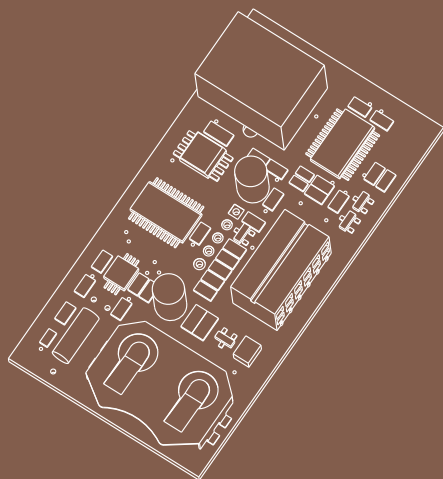


TREG 08K LOGGER CARD

INSTRUCTION MANUAL



SMINN

innovative in electronics

DESCRIPTION

SMINN TREG logger cards are developed with state-of-the-art electronics and technology. They provide a high degree of operating reliability and security. Equipped with USB connection for easy data download and operation by PC. They are designed for transmitter and key tag event logging in SMINN Base Station receivers.

Devices that are built using high quality materials and components and the latest technology. They are made taking into account the current regulations for usage in residential, commercial and high industry environments.

OPERATION

When an SMINN key-tag or transmitter code, sent by the receiver via the plug-in terminal, the TREG card stores the event in its memory with the current date and time.

The TREG card stores up to 8000 events sequentially, starting over from the first one when its capacity is met.

CONFIGURATION

The TREG card is configured and managed with the companion PC software ACESSTOOL LT.

The configuration capabilities are:

- Date and time setup
- Setup of the channels and devices for which storage is allowed
- Change access password.

BATTERY REPLACEMENT

The TREG card uses a 3V CR2032 battery that keeps the clock circuit powered when there is no main power. The duration of this battery is estimated in around 3 years. This time might be lower with high temperatures.

It is convenient to replace this battery periodically with a battery of the same type and quality (Maxell CR2032 3V) to guarantee the system will keep the correct date and time.

Date and time setup must be performed when the battery is changed.

ACCESS LOG

Using Accesstool LT we may download via USB the stored events, check out previously downloaded events and generate spreadsheets. The TREG card does not need to be connected to the receiver to download events as it can be powered via USB and the 3V battery keeps the clock in working state..

INSTALATION

SMINN TREG uses a 7 way plug-in terminal that should only be connected a compatible socket in a compatible receiver. This product may only be used with devices of other manufacturers when they comply with the communication and power requirements of the card.

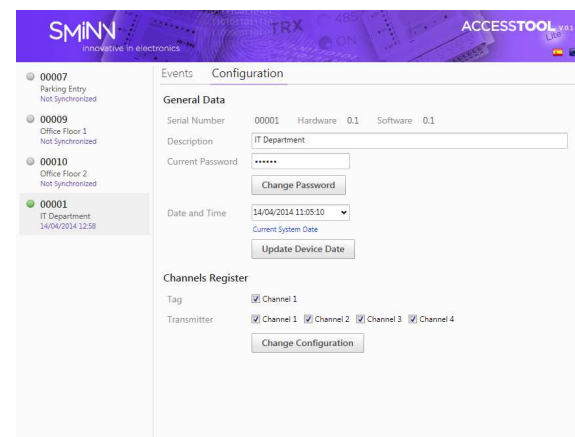
Power must be disconnected before inserting or extracting the card to/from a socket.

USE LIMITATIONS

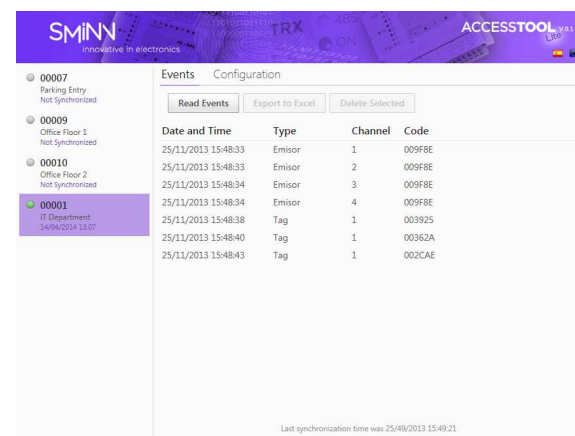
Operation is not guaranteed when installed in different conditions than specified.

THE MANUAL FOR THIS DEVICE MUST BE HANDED TO THE USER, WHO MUST KEEP THEM.
IF THE MANUAL IS LOST THE USER MAY REQUEST A COPY OR DOWNLOAD IT VIA WWW.SMINN.COM

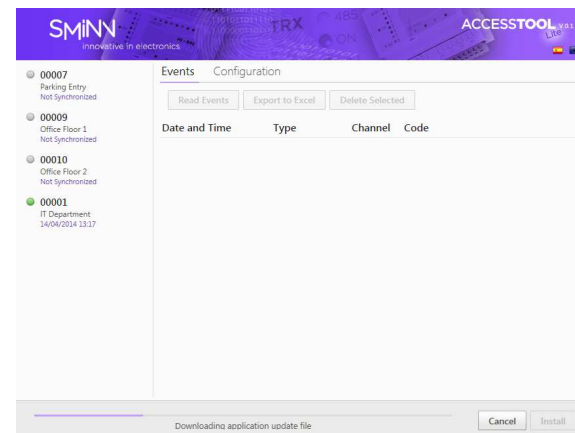
The manufacturer reserves the right to modify the specifications of the devices and this manual without previous notification. This device must be handled by specialized or adequately instructed personnel.



Configuration screen



Events screen



Automatic software update screen



WARRANTY

This product has undergone a complete TEST during its manufacturing process that guarantees its reliability and proper operation. The manufacturer provides 24 months of warranty to the product from the date printed in the product and against any anomaly that it may present in its appearance or operation.

Any damage caused by third parties, natural causes (flooding, fire, lightning, etc.), arising from improper handling or installation, vandalism or any other cause non attributable to the manufacturer will void the warranty. The warranty only covers repairs or replacement of the damaged device.

Any expenses derived from assembling, travelling, transport, natural wear of parts, etc., and, in general, any expenses that are not part of the repairs or replacement of the damaged element of the system are excluded. The installer/provider will ask the manufacturer for a RMA number or authorization for transport of the system in warranty. Without this previous requisite, the manufacturer will not be able neither to process nor provide warranty service.

WARNING

This product must be used in installations which has been conceived for, considering any other as improper use. The packaging must not be dumped in the environment. Keep products, packaging, wrapping, documentation, etc., out of the reach of children. Follow the current local, national or European regulations. The information contained in this document may have some mistakes that will be corrected in future editions. The manufacturer reserves the right to modify the contents of this document or the product without any prior warning.

WASTE ELECTRICAL AND ELECTRONIC EQUIPMENT (WEEE)

In accordance with the European Directive 2002/96/EC about waste electrical and electronic equipment (WEEE), the presence of this symbol (see symbol at the bottom of this text) in the product or in the packaging, means that this article shall not be disposed in local non-classified waste streams. It is the user's responsibility to dispose this product taking it to a collection point designed for waste recycling of electrical and electronic devices. The separate collection of this product helps optimize the waste sorting and recycling of any recyclable material and also decreases the impact on health and the environment. For more information about the correct wasting of this product, please contact the local authority or the distributor where you acquired this product.



CE DECLARATION OF CONFORMITY

The company ELSON SISTEMAS, S.L
Pol. Torrelarragoiti, P6-A3-1ª
48170 Zamudio - Bizkaia (SPAIN)

Declares

The product: TREG Logger Card

Manufactures by ELSON ELECTRÓNICA, S.A.

Under the

trademark: **SMINN**

For use in: Residential, Commercial or light industry environments.

This device meets the provisions as long as its usage is compliant to what was envisaged, having applied the following regulations:

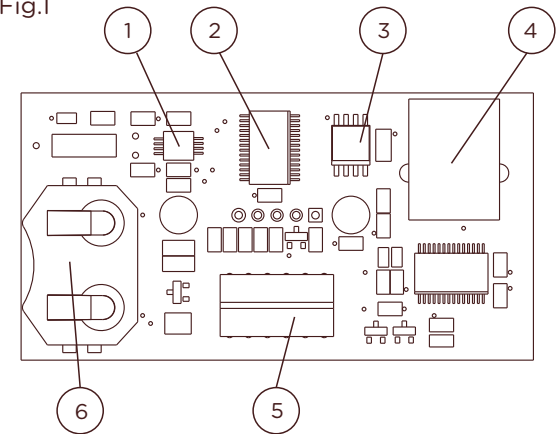
Electromagnetic compatibility: EN 301489-1 v1.3.1 (2001-09)
EN 301489-3 v1.3.1 (2001-11)

Low Voltage EN 60730-1:2000

2011-10-25 Zamudio

Jose Miguel Blanco Perez
Chief Technical Officer

Fig.1



COMPONENTS

1. Clock controller
2. Microcontroller
3. Events memory
4. USB Type B connector
5. STOCKO plug-in terminal to the receiver
6. Battery socket

TECHNICAL CHARACTERISTICS

TREG-08K	8000 Events
TREG-16K	16000 Events
TREG-32K	32000 Events
Power	5V DC +/- 5%
Battery live	CR2032 3V
Consumption in stand by	More than 3 years
Code memorization	Non volatile memory
Available channels	1 to 4
Max. consumption	10 mA
Tª Operating	-20°C - +85° C
Dimensions	68 mm x 35.5 mm

SMINN

innovative in electronics

Elson Sistemas

T. +34 944 525 120
www.sminn.com
info@sminn.com
Pol. Torrelarragoiti, P6 - A3 - 1ª
48170 Zamudio Bizkaia
SPAIN